

KNOW ALL MEN BY THESE PRESENTS THAT WILLARD K. BLEWETT AND ELIZA SWAN BLEWETT HUSBAND AND WIFE AS JOINT TENANTS AND NOT AS TENANTS IN COMMON, OWNERS AND PROPRIETORS OF THE FOLLOWING DESCRIBED PROPERTY SITUATE IN THE STATE OF MINNESOTA, COUNTY OF HUBBARD, TOWIT: ALL OF THAT PART OF GOV'T. LOT 3 AND 4 AND THE SE 1/4 OF NW 1/4, SW 1/4 OF NE 1/4, AND THE NE 1/4 OF SW 1/4, SECTION 9, TOWNSHIP 141 NORTH, RANGE 35 WEST, ACCORDING TO THE UNITED STATES GOV'T. SURVEY THEREOF, DESCRIBED AS FOLLOWS: COMMENCING AT THE N.W. CORNER (IRON PIPE INPLACE) OF GOV'T. LOT 3, SECTION 9, TOWNSHIP 141 NORTH, RANGE 35 WEST, THENCE EAST ALONG THE NORTH LINE OF SAID GOV'T. LOT NO. 3 FOR A DISTANCE OF 613.75 FEET TO A POINT WHICH IS THE POINT OF BEGINNING. THENCE AN ANGLE OF 113° 35' 40" WHEN MEASURED FROM EAST TO SOUTH, LINE BEARING SOUTHWESTERLY 987.0 FEET. THENCE FOR AN ANGLE OF 0° 45' RT. FOR A DISTANCE OF 441.65 FEET. THENCE AN ANGLE OF 12° 07' LT. A DISTANCE OF 350.0 FEET. THENCE AN ANGLE OF 5° 34' LT. A DISTANCE OF 400.0 FEET. THENCE AN ANGLE OF 17° 06' LT. FOR A DISTANCE OF 114.0 FEET. THENCE AN ANGLE OF 65° 50' 20" LT. A DISTANCE OF 357 FEET MORE OR LESS TO THE SHORE LINE OF ISLAND LAKE SO CALLED, THENCE NORTHERLY AND NORTHEASTERLY ALONG SAID SHORE LINE TO THE NORTH BOUNDARY LINE OF GOV'T. LOT 3, THENCE WEST ALONG SAID NORTH BOUNDARY OF GOV'T. LOT 3 TO THE POINT OF BEGINNING. THE ABOVE PARCEL PLATTED AS LOT "A" AND LOT 1 THRU 20, AND THE BELOW PARCEL PLATTED AS LOT 1A THRU 19A COMMENCING AT THE NORTHWEST CORNER OF GOV'T. LOT 3, SECTION 9 TOWNSHIP 141 NORTH, RANGE 35 WEST, THENCE EAST ALONG THE NORTH LINE OF SAID GOV'T. LOT 3 FOR A DISTANCE OF 613.75 FEET. THENCE AN ANGLE OF 113° 35' 40" RT. LINE BEARING SOUTHWESTERLY FOR A DISTANCE OF 295.6 FEET. THENCE AN ANGLE OF 90° 00' RT. FOR A DISTANCE OF 33.0 FEET, TO THE POINT OF BEGINNING. THENCE AN ANGLE OF 90° 00' LT. LINE BEARING SOUTHWESTERLY FOR A DISTANCE OF 691.4 FEET. THENCE AN ANGLE OF 0° 45' RT. FOR A DISTANCE OF 451.65 FEET. THENCE AN ANGLE OF 12° 07' LT. FOR A DISTANCE OF 360.0 FEET. THENCE AN ANGLE OF 5° 34' LT. FOR A DISTANCE OF 380.0 FEET. THENCE AN ANGLE OF 112° 41' RT. FOR A DISTANCE OF 100.0 FEET. THENCE AN ANGLE OF 67° 19' RT. FOR A DISTANCE OF 347.5 FEET. THENCE AN ANGLE OF 5° 34' RT. FOR A DISTANCE OF 392.5 FEET. THENCE AN ANGLE OF 12° 07' RT. FOR A DISTANCE OF 451.65 FEET. THENCE AN ANGLE OF 0° 45' LT. FOR A DISTANCE OF 691.4 FEET. THENCE AN ANGLE OF 90° 00' RT. FOR A DISTANCE OF 100.0 FEET TO THE POINT OF BEGINNING. HAVE CAUSED SAME TO BE SURVEYED AS SKY MANOR AERO ESTATES AND DO HEREBY DONATE AND DEDICATE A PERPETUAL EASEMENT TO PROPERTY OWNERS OF LOTS FOR USE FOREVER, SKY MANOR DRIVE AS SHOWN ON THE ANNEXED PLAT. IN WITNESS WHEREOF WE HAVE HEREUNTO SET OUR HANDS AND SEALS THIS 6 DAY OF Sept. A.D., 1960.

IN PRESENCE OF:

Pauline S. Petkarak SIGNED: *Willard K. Blewett*
Eliza Swan Blewett

STATE OF MINNESOTA } s.s. ON THIS 6 DAY OF Sept. A.D., 1960, BEFORE
 COUNTY OF HUBBARD } ME, A NOTARY PUBLIC PERSONALLY APPEARED WILLARD K. BLEWETT AND ELIZA SWAN BLEWETT HIS WIFE, TO ME KNOWN TO BE THE PERSONS DESCRIBED IN AND WHO EXECUTED THE SAME AS THEIR OWN FREE ACT AND DEED.

Robert J. Anderson
 NOTARY PUBLIC, HUBBARD CO., MINN.
 MY COMMISSION EXPIRES Dec 30, 1960

I HEREBY CERTIFY THAT I HAVE SURVEYED AND PLATTED THE PROPERTY DESCRIBED ON THIS PLAT AS SKY MANOR AERO ESTATES; THAT THIS PLAT IS A CORRECT REPRESENTATION OF SAID SURVEY; THAT ALL DISTANCES ARE CORRECTLY SHOWN ON THE PLAT IN FEET AND DECIMALS OF A FOOT; THAT ALL THE MONUMENTS FOR GUIDANCE OF FUTURE SURVEYS ARE CORRECTLY PLACED IN THE GROUND AS SHOWN ON THE PLAT; THAT THE OUTSIDE BOUNDARY LINES ARE CORRECTLY DESIGNATED ON THE PLAT; THAT THE TOPOGRAPHY OF THE LAND IS CORRECTLY SHOWN ON THE PLAT AND THAT THERE ARE NO WET LANDS OR PUBLIC HIGHWAYS TO BE DESIGNATED ON SAID PLAT OTHER THAN SHOWN THEREON.

A.L. Bye
 SURVEYOR - MINNESOTA REG. NO. 1287

STATE OF MINNESOTA } s.s. ABOVE CERTIFICATE SUBSCRIBED AND SWORN TO
 COUNTY OF BELTRAM } BEFORE ME, A NOTARY PUBLIC THIS 3 DAY OF Sept A.D., 1960.

Martin R. Sathre
 NOTARY PUBLIC, BELTRAM CO., MINN.
 MY COMMISSION EXPIRES Dec 30, 1960

THE FOREGOING PLAT OF SKY MANOR AERO ESTATES WAS APPROVED AND ACCEPTED ON THIS 3rd DAY OF September A.D., 1960.

TOWN BOARD OF ARAGO

BY THE CHAIRMAN *Harry Duddick*
 AND TOWN CLERK *Charles Long*

I HEREBY CERTIFY THAT A REGULAR MEETING OF THE BOARD OF COUNTY COMMISSIONERS OF THE ABOVE SAID COUNTY AND STATE HELD ON THE 6 DAY OF Sept, 1960 THE PLAT OF SKY MANOR AERO ESTATES WAS DULY APPROVED FOR RECORD.

Willard K. Blewett
 AUDITOR, HUBBARD CO., MINNESOTA

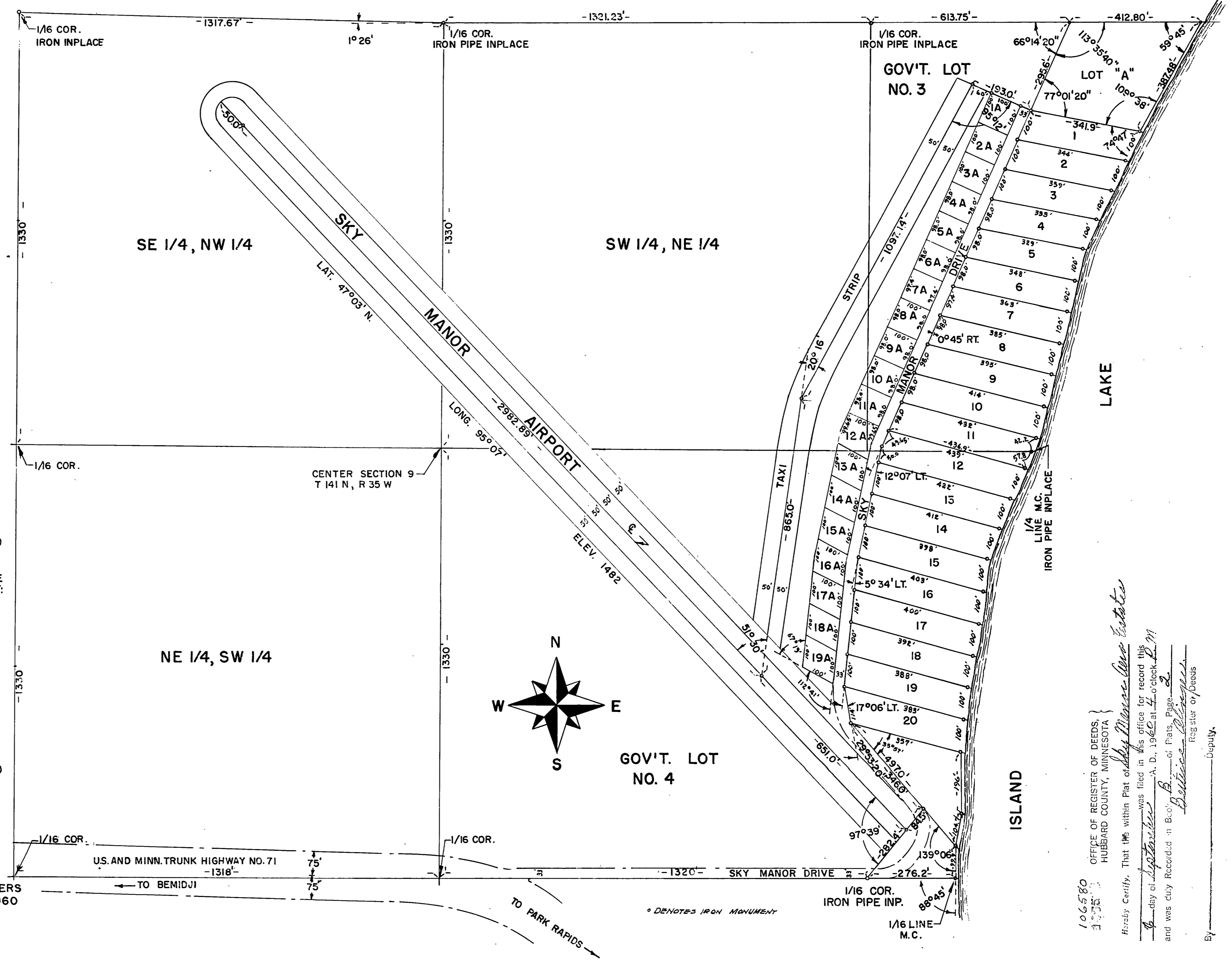
SKY MANOR AERO ESTATES

GOV'T. LOTS 3 AND 4, SE 1/4 OF NW 1/4
 SW 1/4 OF NE 1/4 & NE 1/4 OF SW 1/4
 SECT. 9, T 141 N, R 35 W
 HUBBARD COUNTY, MINNESOTA

SCALE 1" = 200' FT.

SURVEY AUGUST, 1960

A.L. BYE
 REG. LAND SURVEYOR NO. 1287



106580
 OFFICE OF REGISTER OF DEEDS,
 HUBBARD COUNTY, MINNESOTA
 This plat was filed in this office for record this 3 day of September A. D., 1960 at 4:00 o'clock P.M. and was duly recorded in Book B-100 of Plats, Page 8.
Bertine Blomquist
 REG. SUR. or DEPUTY